

# PANORAMA

V I L L A G E

FORMULA 1 GRAN PREMIO DE ESPAÑA  
30th MAY 1st-2nd JUNE 2025

by

**WHY NOT**

# PANORAMA

V I L L A G E

## EUROPE'S BEST HOSPITALITY

AT THE CIRCUIT OF BARCELONA-CATALUNYA

PREMIUM VENUE FOR 800 GUESTS

GARDEN, TERRACES AND PRIVATE SPACES

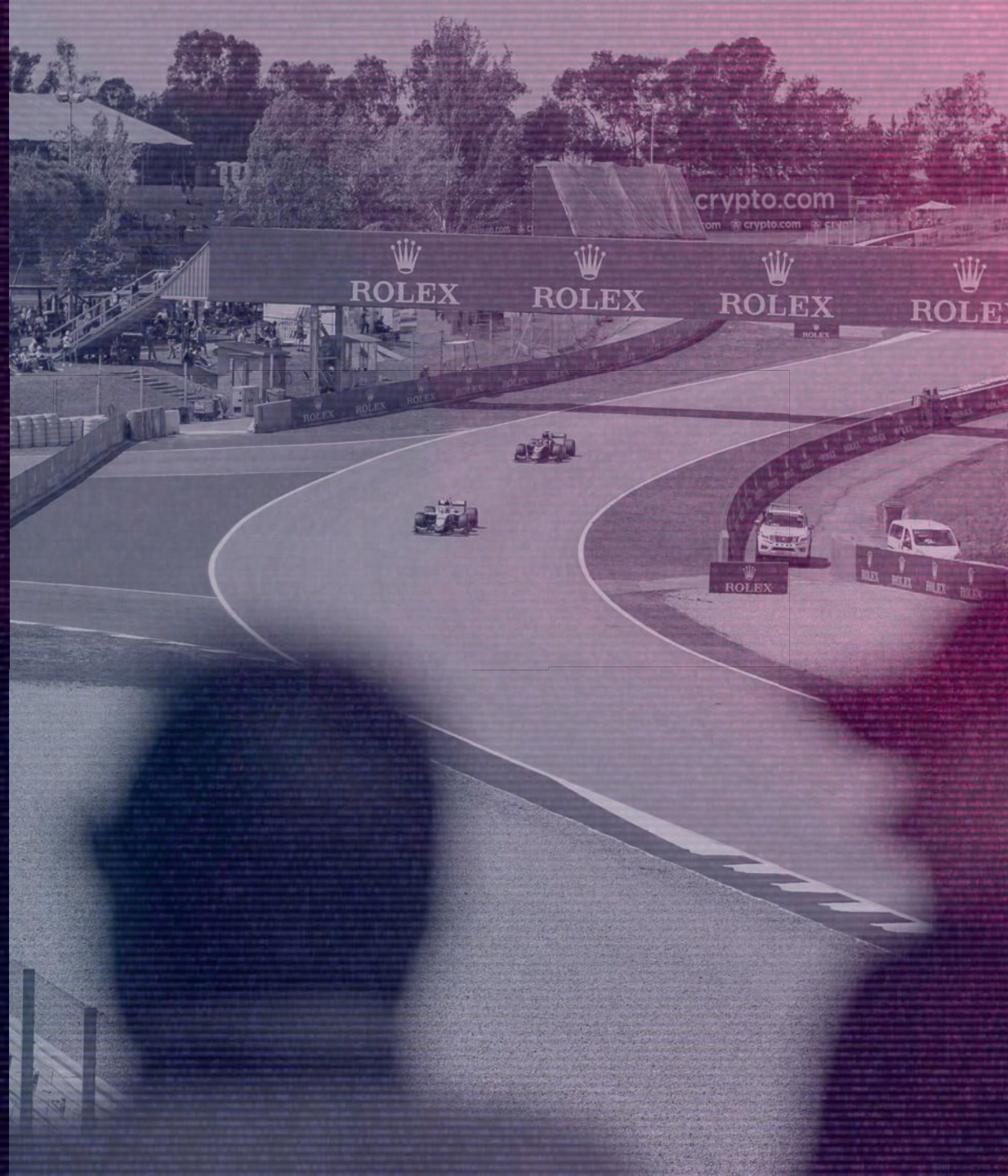
THE CIRCUIT'S BEST VIEWS

THE FINEST GASTRONOMY

INTERNATIONAL MUSIC PROGRAM

PRIVATE PARKING & TRANSFERS

**TIME, SPACE AND EXPERIENCE, REIMAGINED**

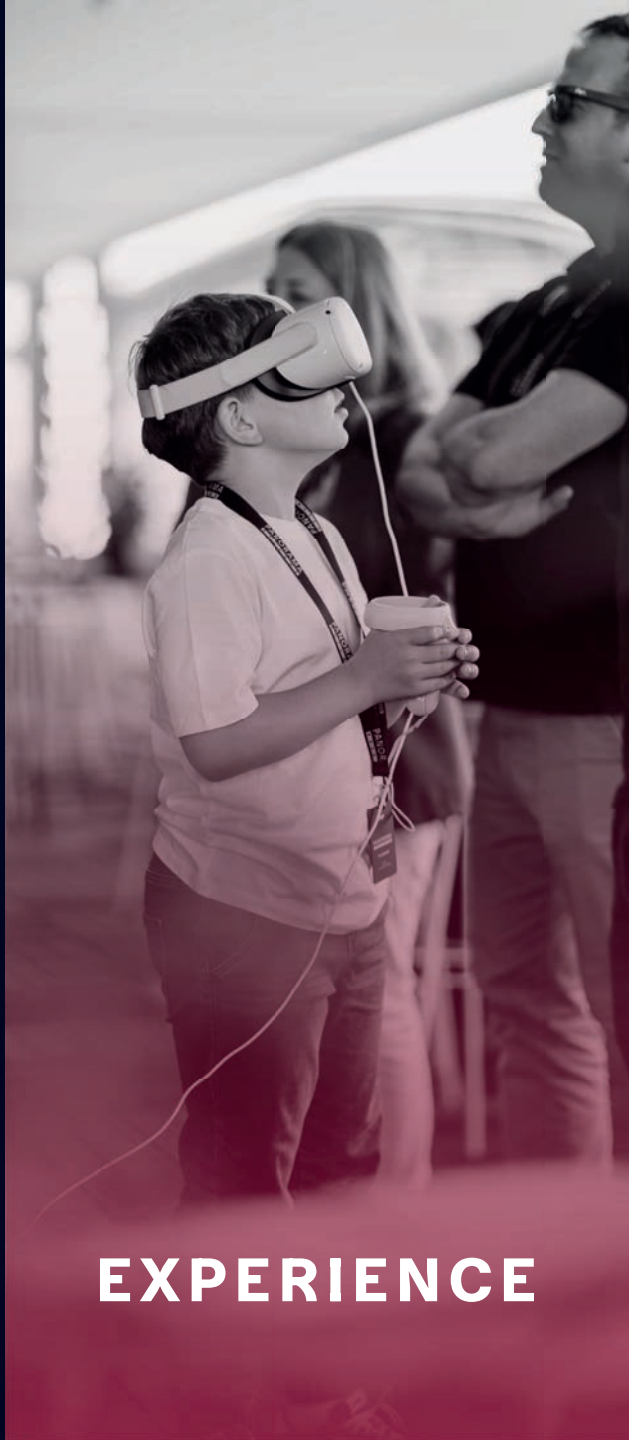




**THE VENUE**



**GASTRONOMY**



**EXPERIENCE**



**MUSIC**



THE VENUE

**PANORAMA**  
VILLAGE



**ROLEX**

**ROLEX**  
15:26:09

OVERALL

1	VER	1:29.264
2	HAM	1:30.000
3	RIJS	1:30.481
4	ALO	1:30.542
5	PER	1:31.078
6	PIA	1:31.137
7	GAS	1:31.757
8	SAI	1:32.883
	E.C.	1:33.924

**Circuit de Barcelona CATALUNYA**

Heineken ★ 00 Heineken ★ 00 Heineken ★ 00 Heineken ★ 00 Heineken ★ 00 Heine















# PANORAMA

V I L L A G E



PANORAMA VILLAGE  
ΩΝΥ ΠΟΤ



A top-down view of a grid of glass jars. Each jar contains a slice of citrus fruit (lemon or orange) and some contain fresh herbs like rosemary. The jars are arranged in a grid pattern. On the right side, a person's hands are visible, wearing a dark, textured garment, possibly a chef's coat, reaching towards the jars. The background is a dark, textured surface, possibly a tablecloth.

GASTRONOMY

**PANORAMA**  
VILLAGE







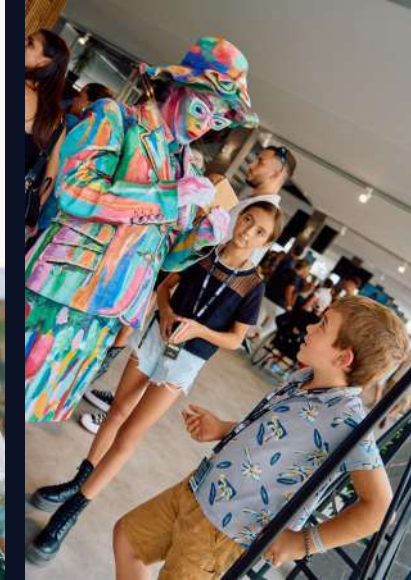


A man is seated in a racing simulator, holding a steering wheel and looking intently at a screen. The simulator is mounted on a base with wheels. In the background, another person is partially visible, and the setting appears to be an indoor facility with large windows. The overall lighting is dim, with a blue and purple tint.


EXPERIENCE

**PANORAMA**  
V I L L A G E





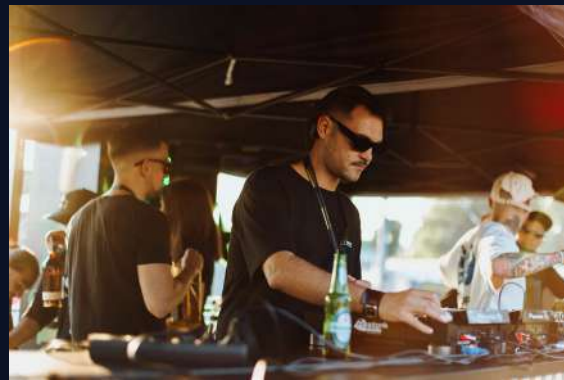


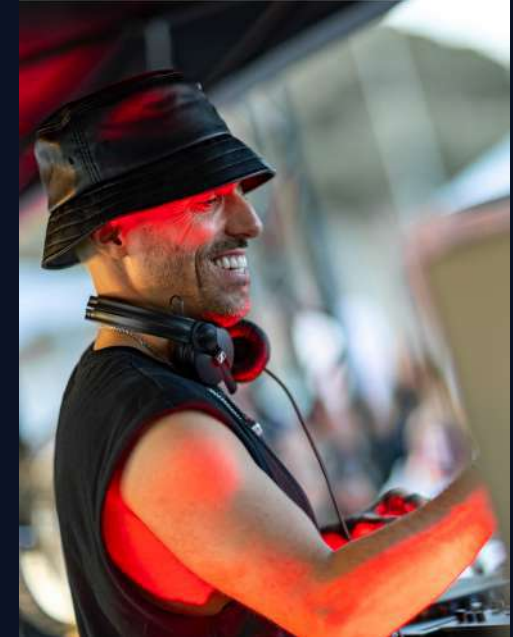
A photograph of a large crowd of people at an outdoor event, possibly a festival or concert. In the background, a large sign with the letters 'BBQ' is visible. The image has a dark, moody color palette with a blue and purple tint. A vertical white line is positioned in the center of the image, passing through the text 'MUSIC'.

MUSIC

**PANORAMA**  
VILLAGE









# F1 PANORAMA VILLAGE

## GOLD ACCESS CARD

Friday, Saturday and Sunday:  
From 9am till 10pm (TBC)

Agenda (Friday: free runs,  
saturday: qualy, sunday: races)

Line-up (TBD)

### INCLUDES:

- VIP Access to the MotoGP Catalan Grand Prix at the Circuit de Barcelona-Catalunya, in the Panorama Village, with views of more than 35% of the track
- Access to the concerts and shows (see line-up)
- Fine gastronomy, special breakfast, lunch and diner.
- Open bar with a selection of the best wines and spirits
- Coffee artists
- Private transfer service within the circuit
- Private parking ( 1 place every 4 access)

\*Does not include VIP table

\*Prices of the different experience passes  
Panorama Village Gold Access Card  
Taxes not included (21% VAT)

**3 DAY PASS** 5.700 €

**FRIDAY PASS** 1.200 €

**SATURDAY PASS** 3.000 €

**SUNDAY PASS** 4.700 €

# F1 PANORAMA VILLAGE

## GARDEN ACCESS CARD

Saturday and Sunday:  
From 5pm till 10pm (TBC)

Agenda (Friday: free runs,  
saturday: qualy + speed, sunday: races)

Line-up (TBD)

### INCLUDES:

- Access to the Panorama Village's Garden only
- Access to the concerts and shows (see line-up)
- Does not include drinks / foods

\*Does not include VIP table

\*Prices of the different experience passes  
Panorama Village Garden Access Card  
Taxes not included (21% VAT)

**FRIDAY PASS** 59 €

**SATURDAY PASS** 79 €

**SUNDAY PASS** 99 €

# F1 PANORAMA VILLAGE

## PRIVATE & VIP TABLES

- The VIP tables at the Panorama Village offer a unique way to experience the Spanish Grand Prix at the Circuit de Barcelona-Catalunya like never before !
- Enjoy all the action with the very best views of the racetrack with a special and personalised attention
- Prices include the cost of the VIP table, a la carte rates bottles, foods served to your table, dedicated waiter and vapers at discretion.



PITLANE TERRACE

The Pitlane Terrace offers views over the entire main straight, the pitlane exit and the first turn.

We have ten tables of 4/5 pax and three high tables for 2 pax.



PANORAMA TERRACE

The Panorama Terrace offers panoramic views of the end of the main straight, the first turn, as well as turns 5, 6, 7, and 8.

We have four presidential tables for 10 pax and two special tables for 8 pax.



F E E L T H E P A N O R A M A R A C I N G V I B E S

**PANORAMA**  
V I L L A G E



# PANORAMA

V I L L A G E

JOIN US IN BARCELONA

**Contact:**

Fritz Baumgartner

[racing@suitours.com](mailto:racing@suitours.com)

+34 93 767 1441